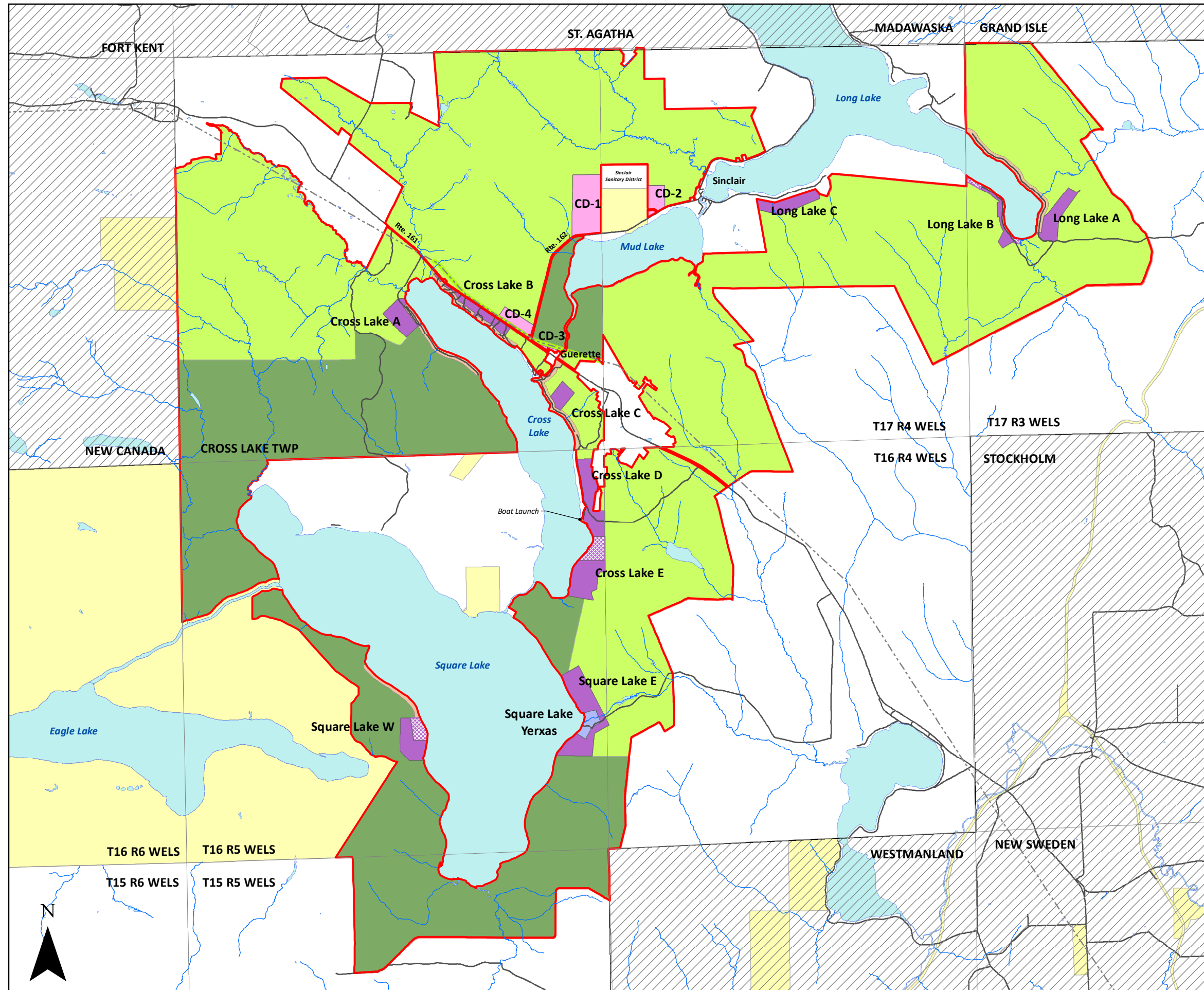


CONCEPT PLAN SUMMARY

Fish River Chain of Lakes Concept Plan



Legend

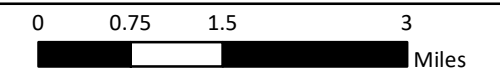
- Major Roads
- - - Transmission Line
- Streams
- ▨ Organized Towns
- Water Bodies
- Proposed Recreational Lodging Area
- Proposed Comm/Econ Development Areas
- Proposed Residential Development Areas
- Proposed Open Space
- Existing/Expanded D-FRL-RS
- Maine Public Reserve Land
- Conservation Easement Area
- ▭ Concept Plan Area

Note

1. The Concept Plan includes other elements (such as water access sites, outpost facilities and public elements) that are described in the Petition. See Map 33 Remote Campsites and Remote Rental Cabins and Map 34 Publicly Accessible Water Access Sites for the location of these elements.

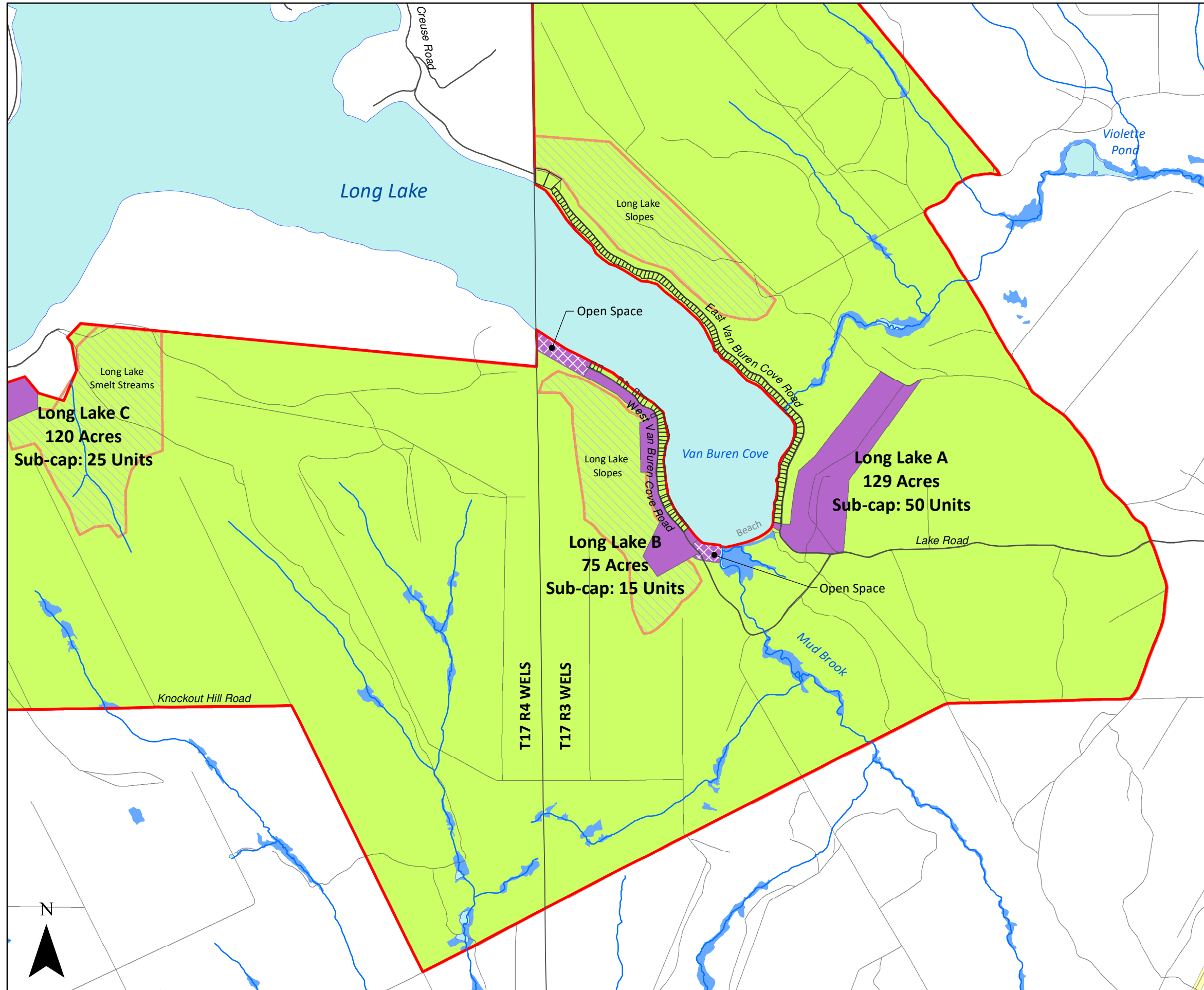


IRVING WOODLANDS, LLC



April 2018

MAP 21



DEVELOPMENT AREAS

Detail Area A

Fish River Chain of Lakes Concept Plan

Legend

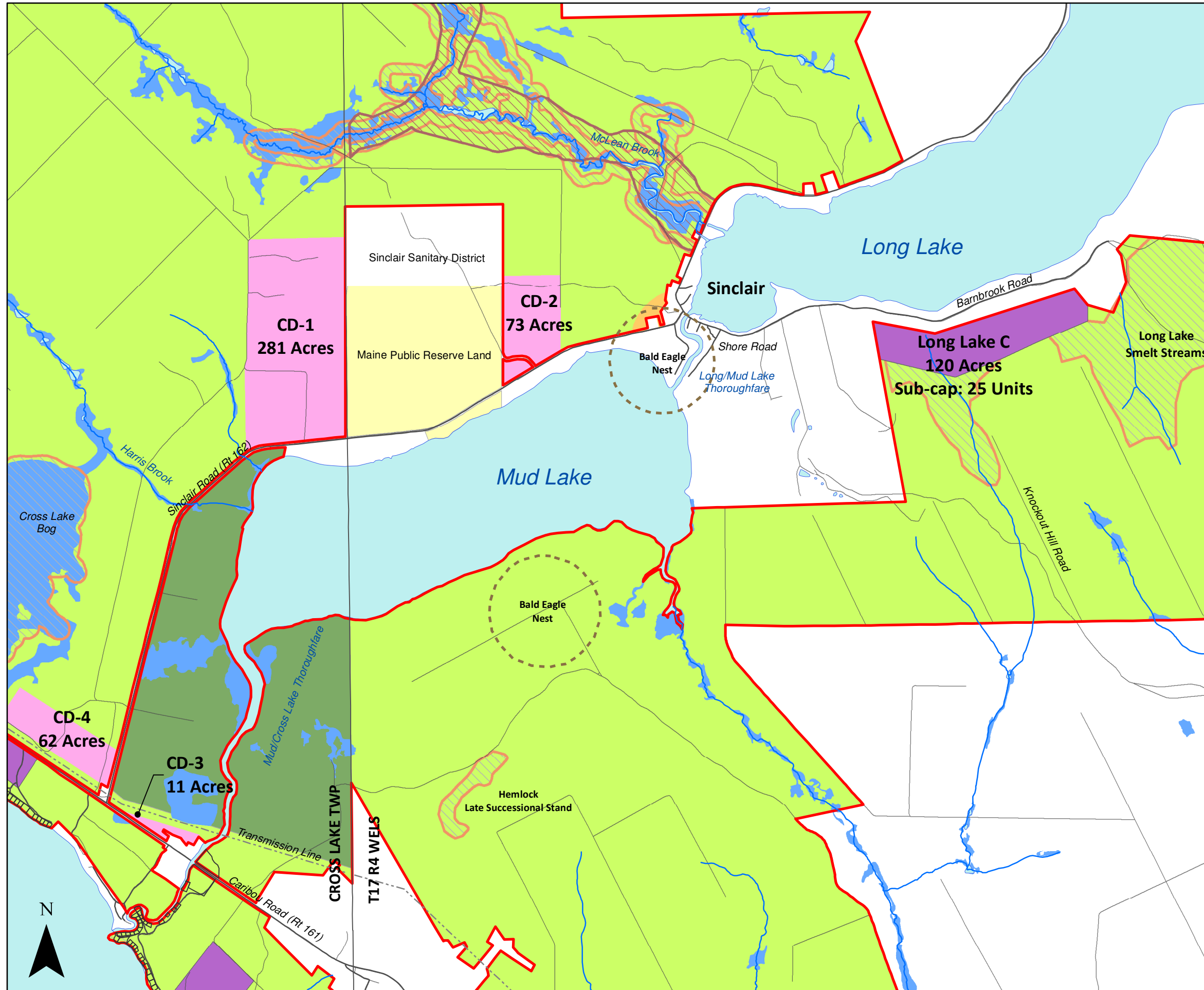
- Major Roads
- Secondary Roads
- Streams
- Wetlands
- Existing Camp Lots
- Proposed Residential Development Areas
- ▨ Proposed Open Space
- ▨ Irving Unique Areas
- Concept Plan Area

- Notes**
1. The total number of new Development Units within the proposed residential development areas (including Square Lake Yexas) is capped at a maximum of 330 units.
 2. Maximum number of new Development units for Long Lake: 75 units.
 3. See Maps 14-17 for existing zoning and Maps 27-31 for proposed land use zones.

IRVING
IRVING WOODLANDS, LLC

0 0.25 0.5 1 Miles

April 2018 **MAP 22**



DEVELOPMENT AREAS

Detail Area B

Fish River Chain of Lakes Concept Plan

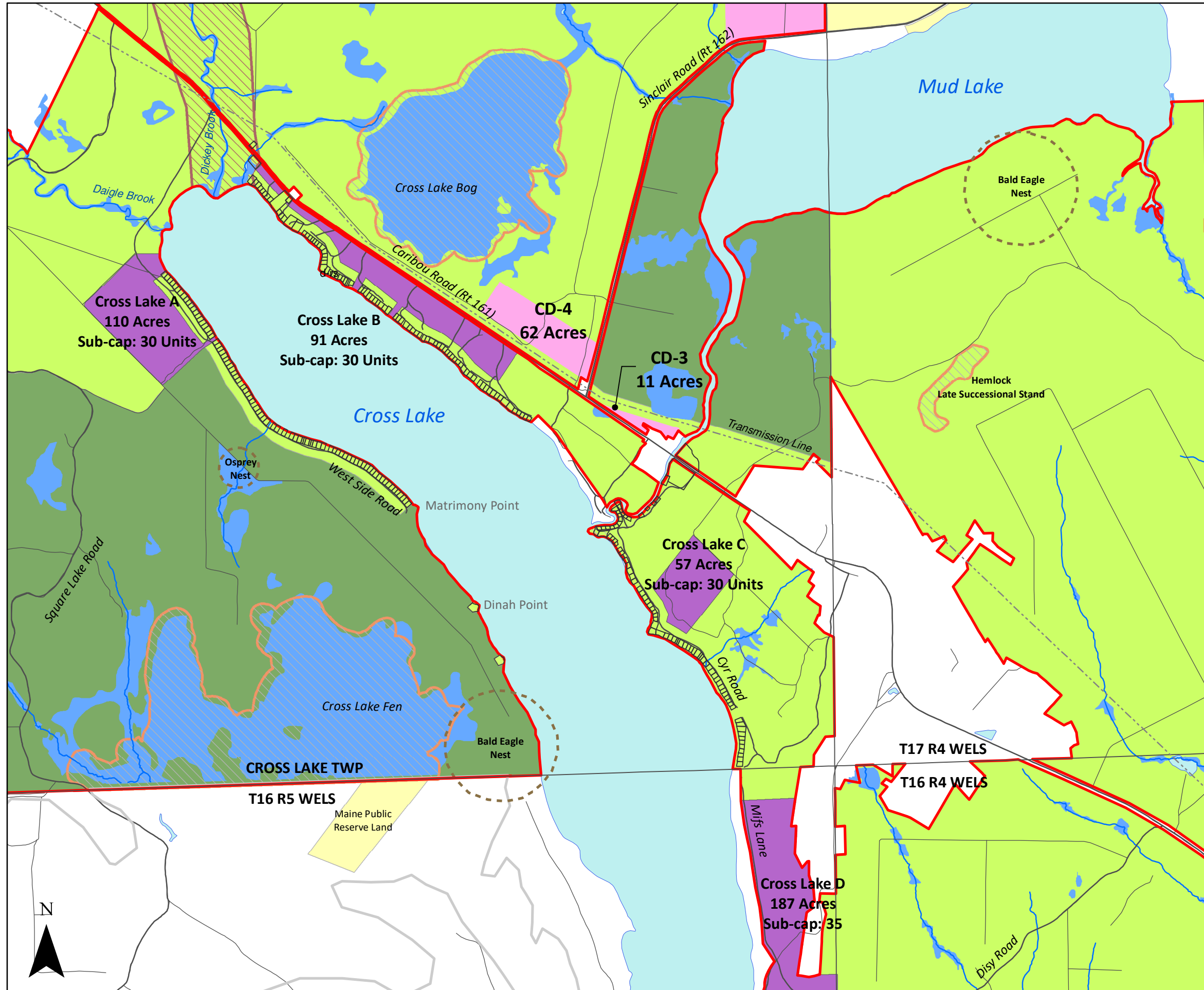
Legend

- Major Roads
- Secondary Roads
- - - Transmission Line
- Streams
- Wetlands
- Existing Camp Lots
- ▨ Deer Wintering Areas
- ▧ Irving Unique Areas
- Nesting Site
- Proposed Comm/Econ Development Areas
- Proposed Residential Development Areas
- Maine Public Reserve Land
- Conservation Easement Area
- Concept Plan Area

- Notes**
1. The total number of new Development Units within the proposed residential development areas (including Square Lake Yexas) is capped at a maximum of 330 units.
 2. Maximum number of new Development units for Long Lake: 75 units.
 3. See Maps 14-17 for existing zoning and Maps 27-31 for proposed land use zones.
 4. See Concept Plan narrative for density limits for CD-1, 2, 3 (a,b,c), and 4.

IRVING
IRVING WOODLANDS, LLC

0 0.25 0.5 1 Miles



DEVELOPMENT AREAS

Detail Area C

Fish River Chain of Lakes Concept Plan

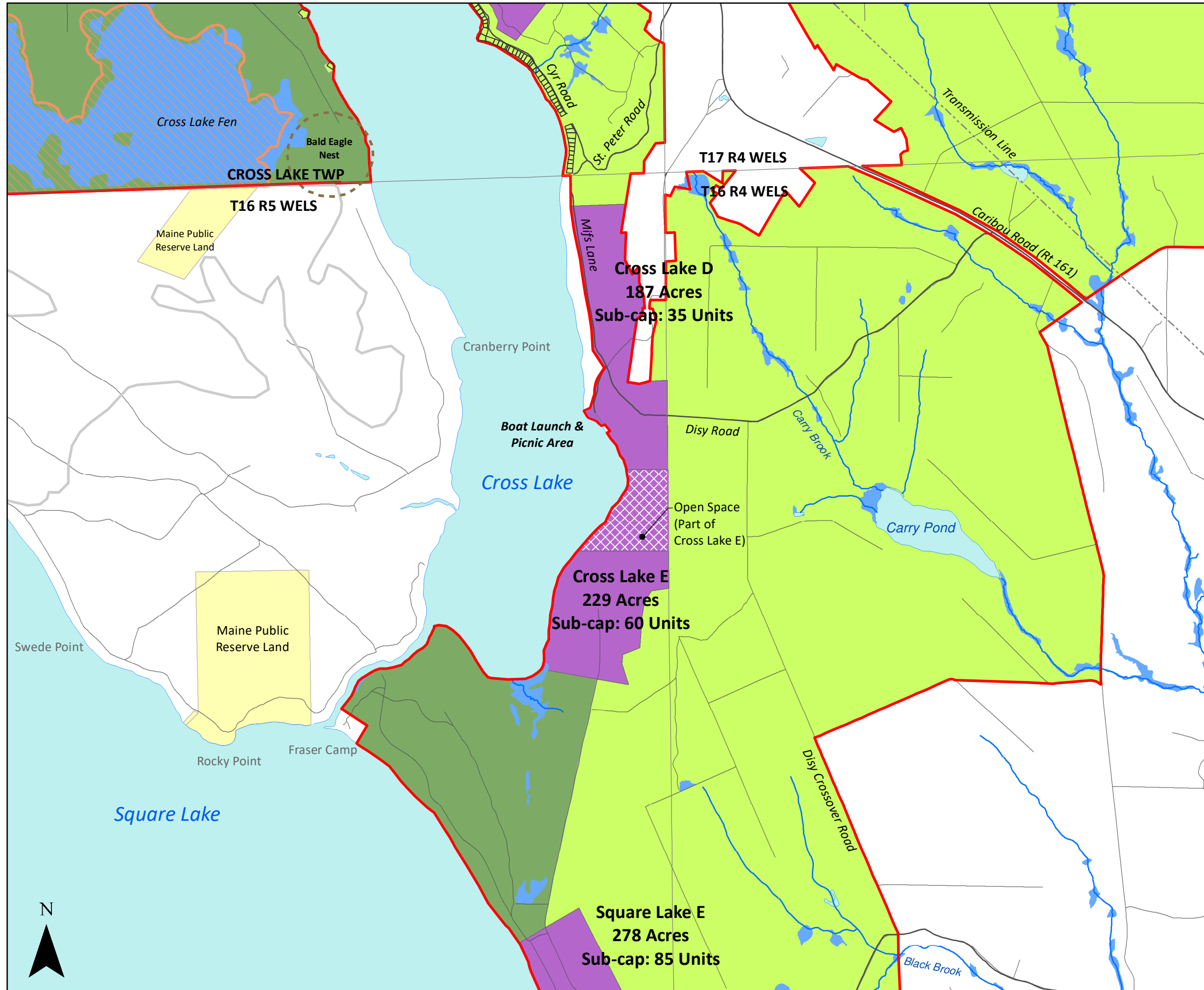
Legend

- Major Roads
- Secondary Roads
- - - Transmission Line
- Streams
- Wetlands
- Existing Camp Lots
- Deer Wintering Areas
- Irving Unique Areas
- Nesting Site
- Proposed Comm/Econ Development Areas
- Proposed Residential Development Areas
- Maine Public Reserve Land
- Conservation Easement Area
- Concept Plan Area

- Notes**
1. The total number of new Development Units within the proposed residential development areas (including Square Lake Yexas) is capped at a maximum of 330 units.
 2. Maximum number of new Development units for Cross Lake: 125 Units.
 3. See Maps 14-17 for existing zoning and Maps 27-31 for proposed land use zones.
 4. See Concept Plan narrative for density limits for CD-1, 2, 3 (a,b,c), and 4.

IRVING
IRVING WOODLANDS, LLC

0 0.25 0.5 1 Miles



DEVELOPMENT AREAS

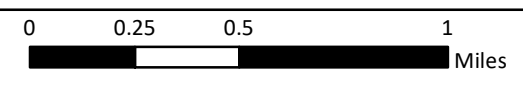
Detail Area D

Fish River Chain of Lakes Concept Plan

Legend

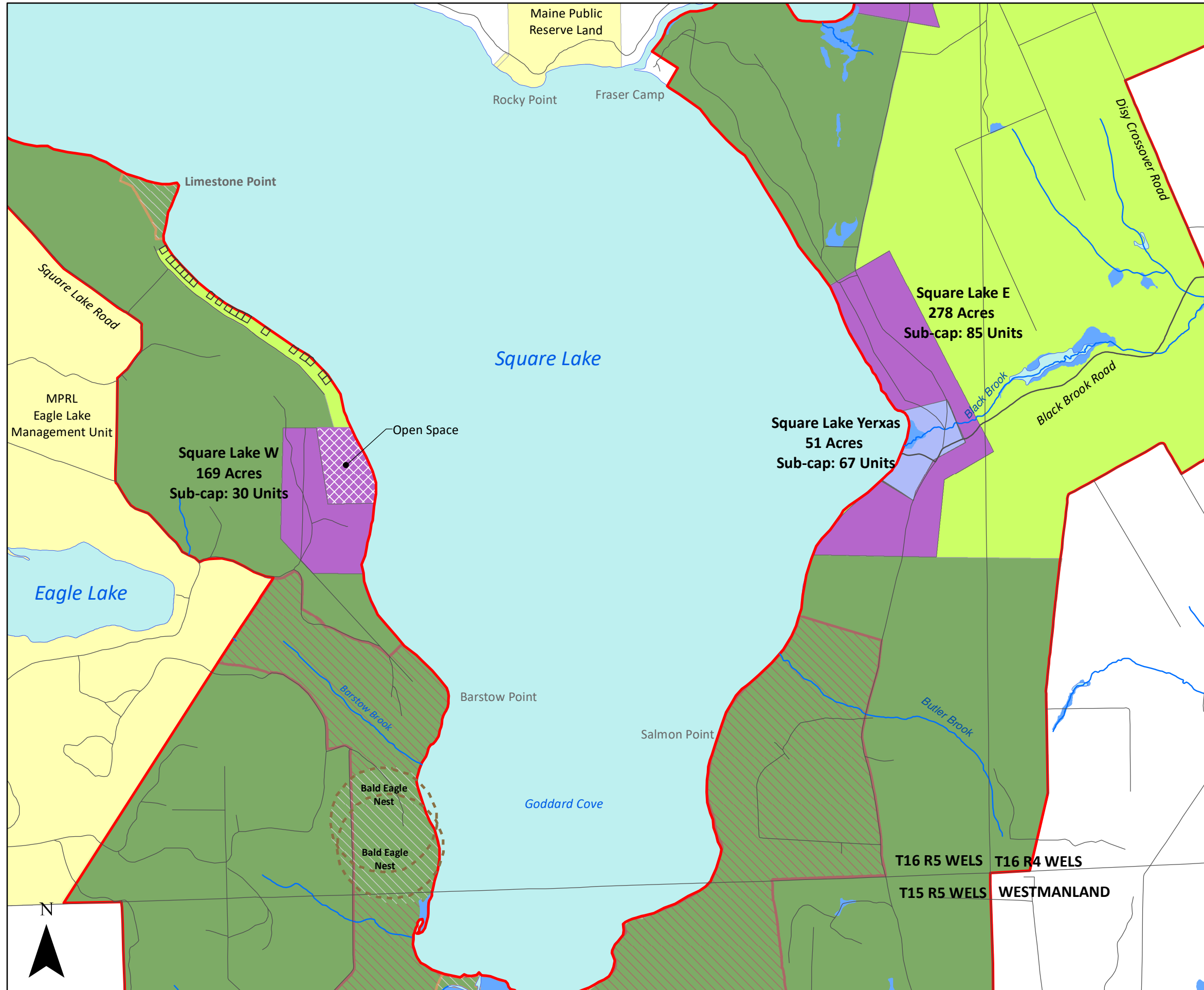
- Major Roads
- Secondary Roads
- - - Transmission Line
- Streams
- Wetlands
- Existing Camp Lots
- ▨ Irving Unique Areas
- Nesting Site
- Proposed Residential Development Areas
- ▨ Proposed Open Space
- Maine Public Reserve Land
- Conservation Easement Area
- Concept Plan Area

- Notes**
1. The total number of new Development Units within the proposed residential development areas (including Square Lake Yexas) is capped at a maximum of 330 units.
 2. Maximum number of new Development units for Cross Lake: 125 Units.
 3. See Maps 14-17 for existing zoning and Maps 27-31 for proposed land use zones.



April 2018

MAP 25



DEVELOPMENT AREAS

Detail Area E

Fish River Chain of Lakes Concept Plan

Legend

- Major Roads
- Secondary Roads
- Streams
- Wetlands
- Existing Camp Lots
- Irving Unique Areas
- Deer Wintering Areas
- Proposed Square Lake Yexas Area
- Proposed Residential Development Areas
- Proposed Open Space
- Maine Public Reserve Land
- Conservation Easement Area
- Concept Plan Area
- Nesting Site

- Notes**
1. The total number of new Development units within the proposed residential development areas (including Square Lake Yexas) is capped at a maximum of 330 units.
 2. Maximum number of new Development units for Square Lake: 130 Units.
 3. See Maps 14-17 for existing zoning and Maps 27-31 for proposed land use zones.

IRVING
IRVING WOODLANDS, LLC

0 0.25 0.5 1 Miles

April 2018 **MAP 26**